



THE ALOS-TTL THROUGH THE LENS VIDEO HEADLIGHT SYSTEM

Capturing procedures from the surgeons line of sight, hands-free, with High Q's original design Through the Lens Video Headlight System is as easy as wearing a headlight. Now, support teams in the OR can see exactly what the surgeon sees throughout a procedure. Teach new techniques, procedures, and use of new instrumentation from the operators point of view - a view otherwise unavailable - until now.

FEATURES:

- Altair HI 2 Fiber Optic Headlight with QED design Through the Lens 1/4" CCD video camera
- 15 mm Lens
- Generous depth of field
- 470 x 350 lines of resolution
- 410,000 pixels
- Output in standard composition or S-Video
- Comfortable headband mounted system
- Operates with any High Q light source
- Available in NTSC or PAL

Available Systems:

The classic OR level ALOS-TTL-X includes the

- Altair HI 2 Fiber Optic Headlight w/1/4" CCD Camera and 15mm Lens
- Nova 300-watt Xenon Light Source
- Camera Control Unit w/ Mounting Bracket
- System Stand
- All necessary Cables

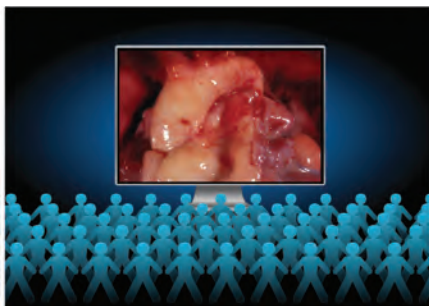
System also works with:



Nova 3, 200-watt Halogen



Beamer 10-watt LED



750 Enterprise Drive
Lexington, KY 40510
480-905-0664 ph
480-905-0794 fax
800-775-3433
www.highq dental.com
sales@highq dental.com



US MADE SINCE 1971

HIGH Q
DENTAL